

*the***ultimate**[®]
collection



PANORAMA

The Ultimate Aluminium Bi-fold and Patio Door System



Welcome

PANORAMA aluminium doors form part of the Ultimate Collection of products, a range of products designed with the emphasis on quality and performance.

We appreciate you are making a significant investment and you should therefore expect your new doors to look beautiful, operate effortlessly and maintain these standards for years to come.

The PANORAMA range is installed across the UK by a network of first class home improvement companies. They will be on hand to advise and guide you through the options, so you are able to make an informed choice.

This brochure is designed to both inform and inspire you. If you are considering aluminium doors we are confident that PANORAMA can offer a solution that will enhance your project.

Thank you for taking the time to learn more about PANORAMA, the Ultimate Aluminium Bi-fold and Patio Door System.



BI-FOLDING DOORS



SINGLE DOORS



LIFT AND SLIDE PATIO DOORS

AESTHETICS

The slim sightlines and large glass areas achieved with PANORAMA aluminium doors, combine to provide a product that is perfectly suited to contemporary spaces. Equally as impressive whether viewed from the inside or outside of the property.

PERFORMANCE

PANORAMA products undergo stringent performance testing. Operation, strength, durability, acoustics, security, thermal performance and weather performance are amongst the many criteria tested.

10 YEAR GUARANTEE

PANORAMA aluminium doors have a 10 Year Manufacturers Guarantee. This is your reassurance of the quality and durability of these highly specified products.

THERMAL EFFICIENCY

A combination of sophisticated aluminium chambered profile and high performance insulated glass sealed units used in PANORAMA bi-fold and patio doors will help to preserve the heat in your home.

EASE OF OPERATION

PANORAMA aluminium doors utilise slim aluminium frames and innovative hardware, resulting in doors that glide smoothly and with little required force. Despite the slim appearance, the aluminium profile offers structural integrity and durability that will endure with only basic maintenance required.

SECURITY

For your reassurance PANORAMA doors are rigorously tested to a high level of burglar resistance and include sophisticated built in security features that will provide confidence and peace of mind.

YOUR SAFETY

PANORAMA DOORS include safety glass as standard (in line with Building Regulation requirements) so in the unfortunate event of accidental glass breakage, the possibility of injury from sharp glass edges is reduced.

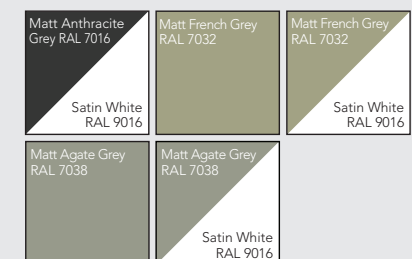
COLOUR & FINISH

We offer three colours as standard, White, Black and Anthracite Grey (same both internal and external) as well as an extended range of finishes (extended lead times).

STANDARD FINISH OPTIONS



EXTENDED RANGE



BI-FOLD DOORS

Bi-fold doors, or folding sliding doors if you prefer, are a modern and innovative design statement that can transform an ordinary room and make it a feature of the house.

These doors can flood the room with natural daylight and open up the house to the garden, letting the outside in.

Bi-fold doors have been hugely popular in the UK for a number of years. The PANORAMA Bi-fold door benefits from years of experience, research and development.

The result is a stylish-looking product that combines industry-leading performance with smooth and reliable operation.

DESIGNED FOR MODERN DAY LIVING

Over time we have changed the way we use our homes. There has been a shift towards large open plan spaces, particularly with combined kitchen and dining areas where we spend so much of our time.

Equally, the distinction between indoor and outdoor living has become less defined with a common emphasis now placed on how the home flows from inside through to the garden.

Bi-fold doors are the perfect solution for those wishing to maintain the sense of light and space in the home and when the weather permits open up fully into the garden.

PANORAMA Bi-fold doors can be designed with up to 6 panes and in a variety of folding configurations. Should you want to, a single traffic door can be specified left or right to give access in and out without the need to open up the full width of the door.



INNOVATIVE FEATURES AND BENEFITS

- Slim frames providing maximum light
- Doors fold neatly to maximise opening
- Thermal insulation down to 1.1 W/m²K U value (depending on glazing specification)
- Double or Triple glazed options
- Security to British and European standards
- Inward or outward opening
- Four threshold options
- Water resistance up to 600 Pa
- Up to 6 door leaves
- Maximum height 2500 mm
- Maximum door leaf width 1000 mm
- High spec stainless steel rollers
- Range of handle finish options



Technical Characteristics

Variants	Flush threshold	Low threshold	Double weather seal	High performance
Visible width / height	Frame / threshold	0-15 mm	9-30 mm	23-44 mm
	Frame-vent section		100 mm	23-74 mm
	Vent-vent section		131 mm	
Overall system depth			68 mm	
Maximum element height			2500 mm	
Maximum vent weight			90 kg	
Rebate height			14 mm	
Glass thickness			28-36 mm	
Glazing method			dry glazing with EPDM or neutral silicones	
Thermal insulation			23 mm, 27,5 mm and 32 mm fibreglass reinforced polyamide strips	
HI variant			extra insulation foams	

Performance

Energy	Flush threshold	Low threshold	Double weather seal	High performance
Thermal insulation ⁽¹⁾ EN ISO 10077-2				Uf-value down to 1.8 W/m ² K ^(*) , depending on the profile combination
Comfort				
Air-tightness, max. test pressure ⁽²⁾ EN 12207	Not applicable	Class 4	Class 4	Class 4
Water-tightness ⁽³⁾ EN 12208	Not applicable	Class 5A (200 Pa)	Class 7A (300 Pa)	Up to Class 9a (600 Pa)
Wind load resistance ⁽⁴⁾ EN 12211; EN 12210	Not applicable	C1/B3	C2/B3	C2/B3
Safety				
Burglar resistance ⁽⁵⁾ ENV 1627 – ENV 1630	Not applicable	RC2	RC2	RC2

This table shows classes and values of performance, which can be achieved for specific configurations and opening types.

⁽¹⁾ The Uf value measures the heat flow. The lower the Uf value, the better the thermal performance of the product.

⁽²⁾ The air-tightness test measures the volume of air that would pass through a closed product at a certain air pressure.

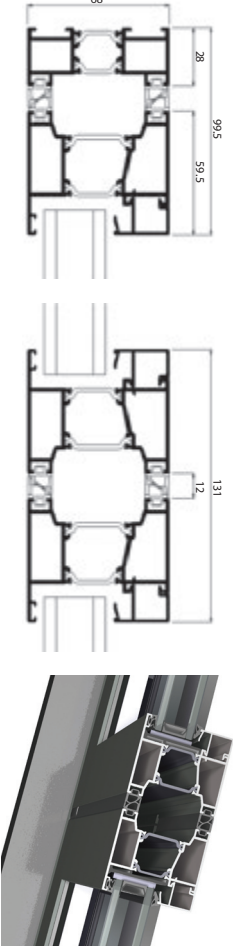
⁽³⁾ The water-tightness test involves applying a uniform water spray at increasing air pressure until water penetrates the product.

⁽⁴⁾ The wind load resistance test is a measure of the profile's structural strength and involves applying increasing levels of air pressure to simulate wind force.

⁽⁵⁾ The burglar resistance is tested using static and dynamic loads, as well as simulated attempts to break in using specified tools. This variant requires specific burglar resistant accessories.

^(*) Please refer to Reynaers' CE passport for all technical data including size limitations.

^(*) Value for HI-variant.



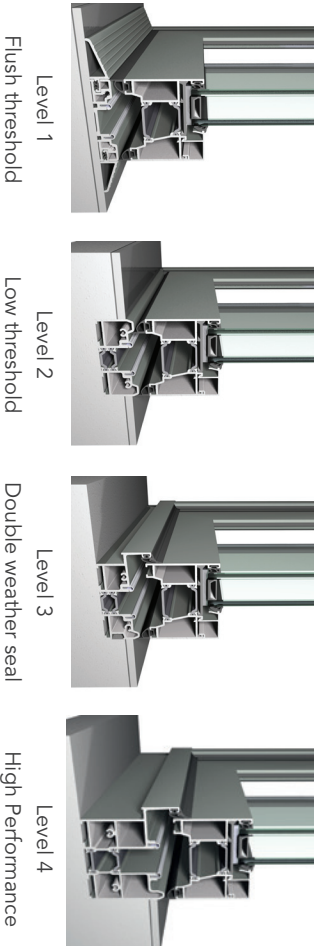
THRESHOLD OPTIONS

The CF 68 can be specified with any of our four different threshold options:

- Flush threshold (Level 1)
- Low threshold (Level 2)
- Double weather seal (Level 3)
- High performance (Level 4)

Each threshold option gives a trade-off between weather performance and ease of passage. The High Performance option offers the best air, wind and water performance but has the highest threshold step. The Double Weather Seal solution combines good weather resistance with a lower threshold.

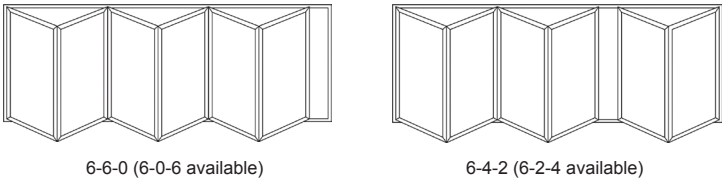
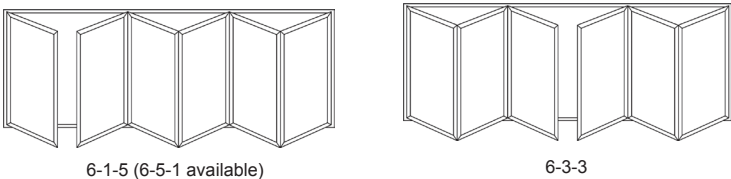
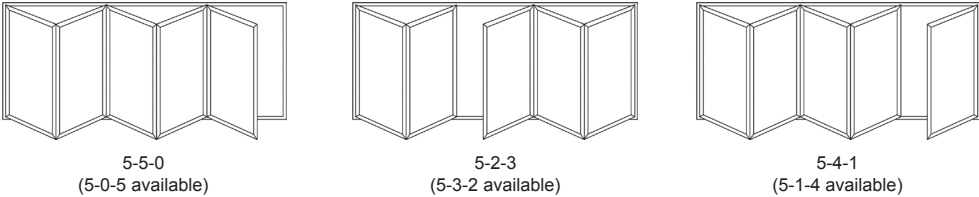
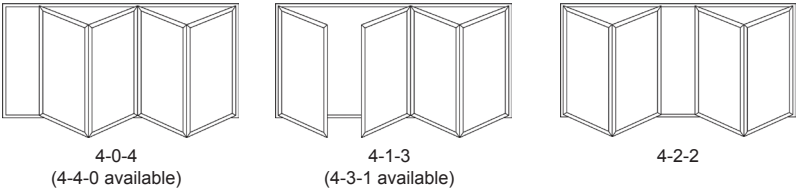
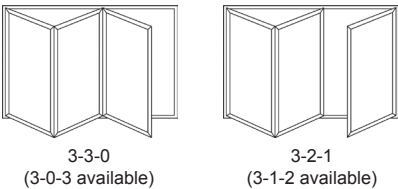
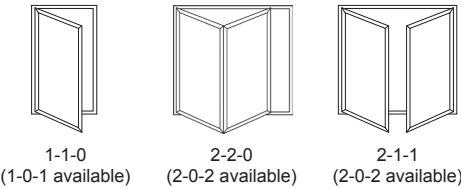
The Low Threshold option can be set into the floor to meet the requirements of building regulations, and the Flush Threshold solution allows easy passage with no step at all, but this is at the expense of weather-proofing.



VERSATILE DESIGN OPTIONS

Available in a number of configurations using up to 6 door leaves, you can specify a design where all the door leaves stack to the same side, or a design where some stack one way and some the other.

Choose whether you want the doors to open in or out, and remember that designs with a single traffic door enable you to slip quickly and easily into the garden, while leaving the other doors in place.



STANDARD HANDLE OPTIONS

The Standard Bi-Fold Handles are available in 5 colour finishes, all with intermediate door handles to match.



White

Polished Chrome

Satin Chrome

Anthracite Grey

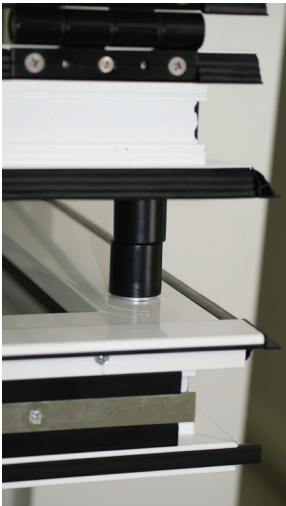
Black

High Security Cylinder

To prevent cylinder manipulation, Ultimate doors are fitted with a 3 star high security Yale cylinder, and for convenience all doors are supplied with 3 keys as standard.



the **ultimate**[®]
collection
Partnership secured with **Yale**



Colour Coded Magnetic Catches



White

Polished Chrome

Satin Chrome

Anthracite Grey

Black

Open & Close function
and key storage

Centrefold D-Handles
available in White, Black
or Anthracite Grey

LETTING THE OUTSIDE IN WITH LIFT AND SLIDE DOORS

A sliding door opens up a multitude of possibilities. Open this door just a few centimetres for a little fresh air, a little wider to slip out into the garden or open it all the way to really let the outside in.

This versatile door creates an extra feeling of space and generates more natural light within the home.

DURABILITY

The PANORAMA lift and slide door uses durable, stainless steel wheels and rails for ease of operation. The sliding door is lifted slightly before opening or closing.

This reduces the friction and makes the operation smooth and effortless. In the closed position, the lift and slide door is lowered onto the track, providing additional weather resistance.

SMOOTH OPERATION

PANORAMA is a premium insulated sliding door system combining high weather performance with enhanced security and great aesthetics. With a lift and slide mechanism, this sliding door system is designed with ease of use in mind.

The system not only glides smoothly, it also has a slimline mid-section interlock to maximise the glass area. With a maximum vent weight of 300 kg and a maximum height of 2.5 m, this versatile system is ideal for most residential applications.

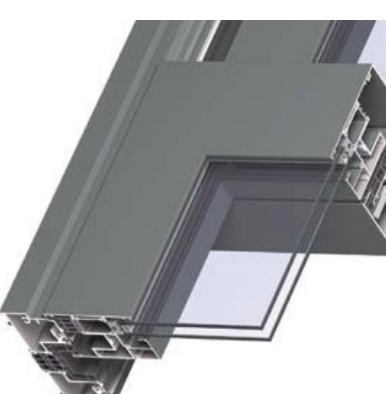
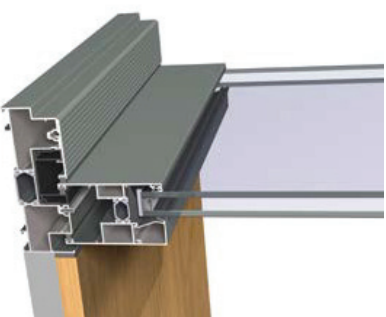
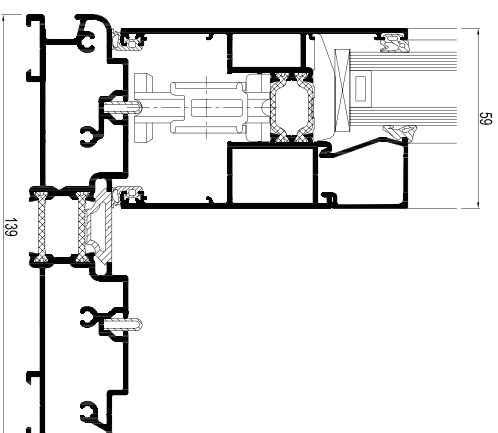
Thermal insulation is important for most people, and PANORAMA door offers industry-leading performance in this respect. With a double glazed sealed unit, a whole door U-value as low as 1.5 W/m²K; with triple glazing, this can be further improved to a phenomenal 1.1 W/m²K.



PRODUCT SPECIFICATIONS

- Satin White Ral 9016, Matt Black Ral 9011 or Matt Anthracite Grey Ral 7016 finish options (see page 3 for additional options on extended lead times)
- Lift and slide operation
- Effortless operation with up to 300kg maximum vent weight
- 2 point locking system with 4 point optional upgrade
- 10 Year Guarantee
- Stainless steel rollers
- Anti-stick Teflon coated gaskets
- Slimline mid-section interlock
- Twin or Triple track sliding options
- Sealed units depths from 28-36 mm
- Range of handles and finishes





Flush floor integration

Slim Line middle section

Technical Characteristics

Variants	CP 130-LS Twin track and triple Track	
Frame / Threshold	20 / 28 / 35 / 40 mm	
Vent	94 mm	
T-profile	from 76 mm to 154 mm	
Meeting section	69 / 98 mm	
Meeting section 4 doors	194 mm	
Frame	Twin Track: 139 mm Triple track: 210 mm	
Vent	59 mm	
Maximum element height	2500 mm	
Maximum vent weight	300 kg	
Rebate height	25 mm	
Glass thickness	28-36 mm	
Glazing method	Dry glazing with EPDM or neutral silicones	
Thermal insulation	23 mm and 32 mm fibreglass reinforced polyamide strips	
HI variant	extra insulation gaskets	

Performance

Energy	Uf-value down to 2,35 W/m ² K, depending on the frame/vent combination				
Thermal insulation ⁽¹⁾ EN 10077-2					
Acoustic performance ⁽²⁾ EN ISO 140-3; EN ISO 717-1	Rw (C;Ctr) = 35 (-2;-6) dB / 39 (-1;-3) dB, depending on glazing type				
Air-tightness, max. test pressure ⁽³⁾ EN 12207					
Water-tightness (Design Dependent) ⁽⁴⁾ EN 12208	7A (500 Pa)	8A (600 Pa)	9A (800 Pa)	9A (1000 Pa)	9A (1200 Pa)
Wind load resistance, max. test pressure (Design Dependent) ⁽⁵⁾ EN 12211; EN 12210	2 (800 Pa)	3 (1000 Pa)	4 (1400 Pa)	5 (2000 Pa)	5 (2000 Pa)
Wind load resistance to frame deflection ⁽⁵⁾ EN 12211; EN 12210	B (≤ 1/200 Pa)				
Comfort					
Burglar resistance ⁽⁶⁾ EN 1627 – EN 1630	RC 2				

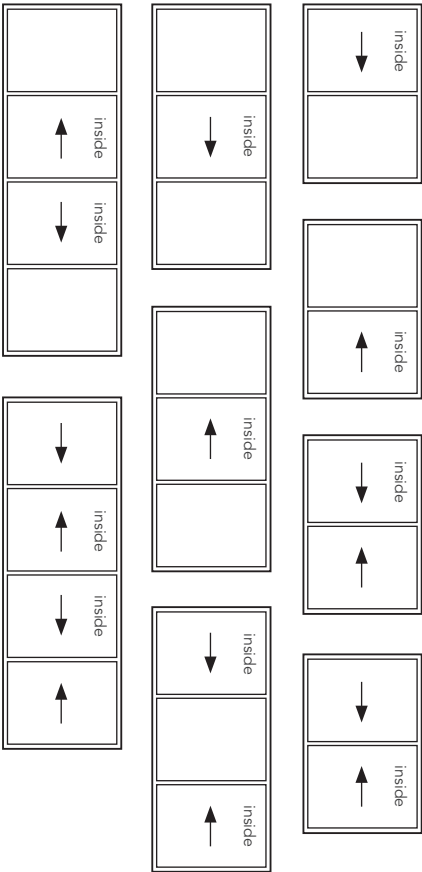
This table shows classes and values of performance, which can be achieved for specific configurations and opening types.

- (1) The Uf-value measures the heat flow. The lower the Uf-value, the better the thermal insulation of the frame.
- (2) This table shows classes and values of performance, which can be achieved for specific configurations and opening types.
- (3) The air-tightness test measures the volume of air that would pass through a closed product at a certain air pressure.
- (4) The water-tightness test involves applying a uniform water spray at increasing air pressure until water penetrates the product.
- (5) The wind load resistance is a measure of the profile's structural strength and is tested by applying increasing levels of air pressure to simulate the wind force.
- (6) The burglar resistance is tested by static and dynamic loads, as well as by simulated attempts to break in using specified tools. This variant requires specific burglar resistance accessories.

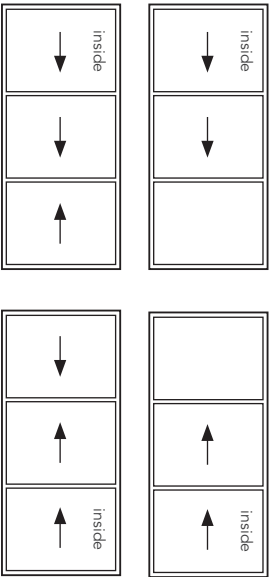
LIFT & SLIDE DOOR CONFIGURATIONS

Choose from a twin track or triple track system, depending on the width of the opening and your preferred configuration of fixed panes and sliding doors.

TWIN TRACK OPENING CONFIGURATIONS



TRIPLE TRACK OPENING CONFIGURATIONS



*'inside' denotes slider on internal track



STANDARD HANDLE OPTIONS

Our Lift and Slide Patio Door handles are available in the same 5 colour finishes, with finger pull cups to match:



White



Polished
Stainless Steel



Satin Chrome



Anthracite Grey



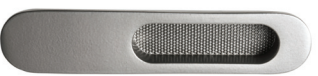
Black



White



Polished
Stainless Steel



Satin Chrome



Anthracite Grey



Black



Quality Assurance

Ultimate products are put through regular stringent tests to ensure a consistent high level of quality, but don't just take our word for it...

The British Standards Kitemark is one of the most well known and respected product certification marks in the world and is your reassurance that BSI has checked that your Ultimate products comply with the latest British Standard.

Quality Assurance ISO 9001:2015

This certification was awarded for providing a high level of Quality Control systems throughout manufacture, administration, health & safety, and products including that of our suppliers such as profile and hardware. We are required to give BSI unrestricted access to our offices and factories and allow random samples to be selected for testing on a regular basis.

BS EN1279 PT2. Sealed Units

A thorough and daily test routine for double glazed sealed units is carried out to ensure certification. Tests prove that sealed units adhere to correct dew point, sealant correctness and desiccant moisture absorbency.

BFRC. Product Energy Ratings

Products are assessed using specific glazing and given a rating for energy efficiency. You will be reassured to know that Panorama products currently meet the latest domestic replacement building regulations 2022.



ISO 9001:2015
FM 33147



BS EN1279 PT2
KM 37462
AG Glass





In keeping with market trends and improvements we reserve the right to change specifications accordingly and without notice.
Hardware, furniture and glass options may vary from those shown on images used at the time of print. Published by John Fredericks Plastics June 2022.

the **ultimate**[®]
collection



www.theultimatecollection.uk